

y c





Flowchart: Education and training requirements for newly qualified registered nurses wanting to work in sexual health, contraception or HIV or those wishing to change roles 6

Flowchart: Courses

Introduction

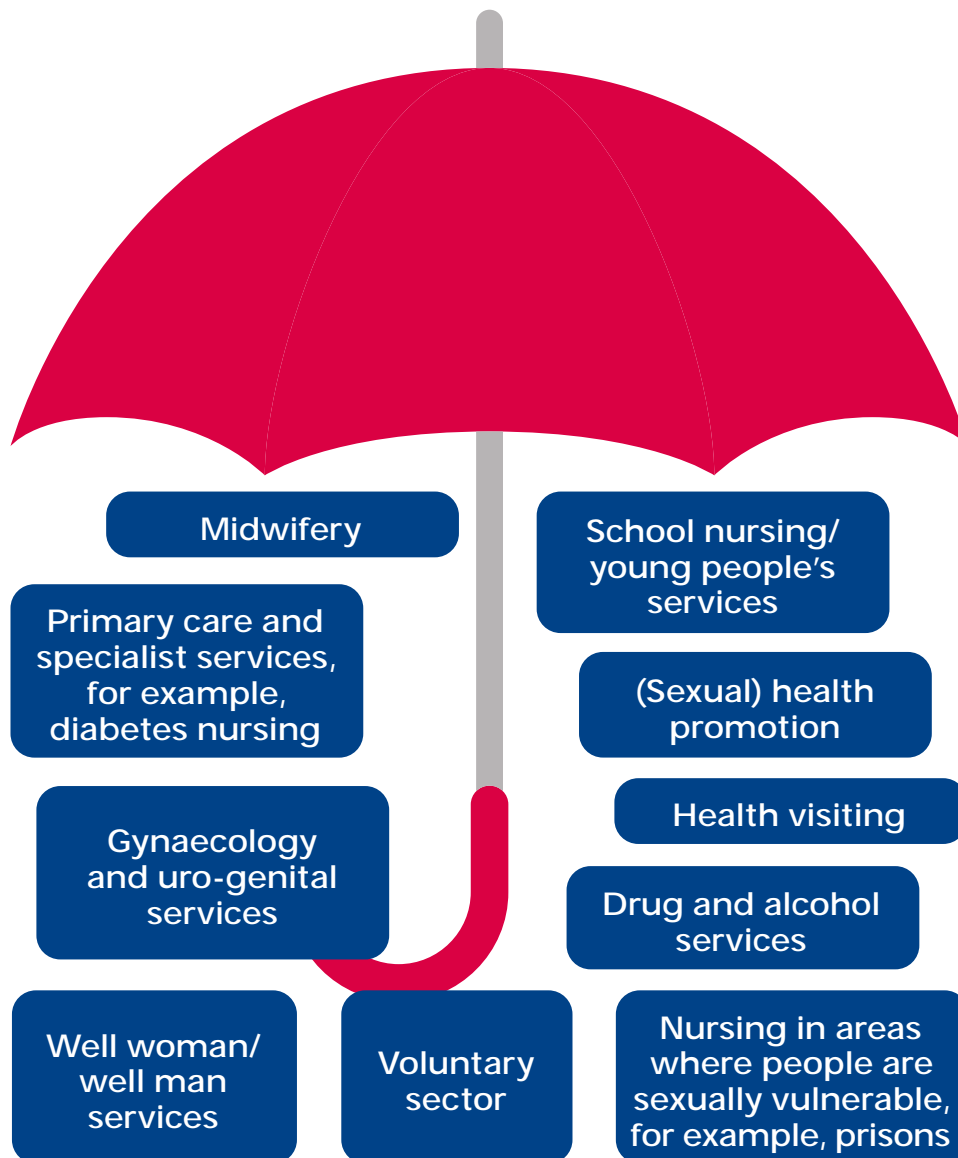
Sexual health encompasses genito-urinary medicine, sexual and reproductive health, psychosexual counselling, abortion services and HIV.

Nurses and midwives who wish to work in sexual and reproductive health need further education and training to do so. It is a specialist area that requires post-registration education, training and development not covered on undergraduate programmes in enough depth.

Nurses and midwives may choose to work in sexual health, which was formerly known as genito-urinary medicine, which addresses sexually transmitted infections, or reproductive services, which covers contraception and

will need to have development specific to the type of service. Sexual health services are predominantly integrated which means that they provide all contraceptive methods and sexually transmitted infection diagnosis, treatment and management. For these services nurses will need to have development in both sexual and reproduction health (see the umbrella diagram below which shows the breadth within the specialty).

Nurses working in primary care or other specialist services may just require specific bespoke knowledge and skills and education programmes as appropriate to their role and the service.



Flowcharts

The flow chart on [sexual health education](#) maps out routes that you may take to train in these areas. If you are interested in this area then universities and the Faculty of Sexual and Reproductive Healthcare offer introductory study days on sexual and reproductive health. You can find these at fshr.org and through your local trust, practice development nurse and local university.

It is important to note that these days do not allow you to work or practice independently in this area and would not qualify you to work to patient group directions (PGDs) or prescribe. They are intended to provide a taster on the subject to see if you want to progress and develop further. These introductory days should highlight the importance of early intervention and where/to whom to refer.

The RCN has developed a directory aimed at providing an overview of the sort of education and learning required to practice in sexual, reproductive and HIV care and how to achieve this. It is available at: rcn.org.uk/sexualhealtheducationdirectory and will be updated regularly as new programmes and courses become available.

Local services may have developed their own pathway – the one here is a suggested national pathway.

The screenshot shows the Royal College of Nursing website. At the top, there is a navigation bar with links for Contact, Quick links, Log in, and a 'BECOME A MPE' button. Below this is a search bar and a main menu with categories like Membership, Employment and Pay, Professional Development, Clinical, Library, Get Involved, Get Help, News & Events, and About. The main content area features a large image of a smiling man and woman. Below the image is the heading 'Sexual health education' and a breadcrumb trail: 'You are here: Royal College of Nursing / Clinical / Public health / Sexual Health / Sexual health education'. The page is part of a resource from Health Education England. The main text states: 'This resource highlights training and qualification requirements for registered nurses, midwives, health advisers and nursing assistants who support staff working in sexual health.' It defines Sexual Health (SH) as encompassing genito-urinary medicine, sexual and reproductive health, psychosexual medicine and counselling, abortion services and HIV. It mentions that the resource provides an outline of the education and qualifications needed for nursing and midwifery staff. To the right, there is a flowchart diagram with an umbrella icon. The umbrella is labeled 'Contraceptive and reproductive services'. Below the umbrella, there are several boxes representing different service areas: 'Primary care and specialist services, for example, diabetes nursing', 'Midwifery', 'School young person services', '(Sexual) health promotion', and 'Health visiting'. The flowchart also includes a box for 'Specialist services'.

Loc IUT and/or
of Loc SDII

ANP/ACNS
(sexual health)

ANP/ACNS
(HIV)

Masters level award in
Advanced Clinical Practice

Masters level award in
Advanced Clinical Practice

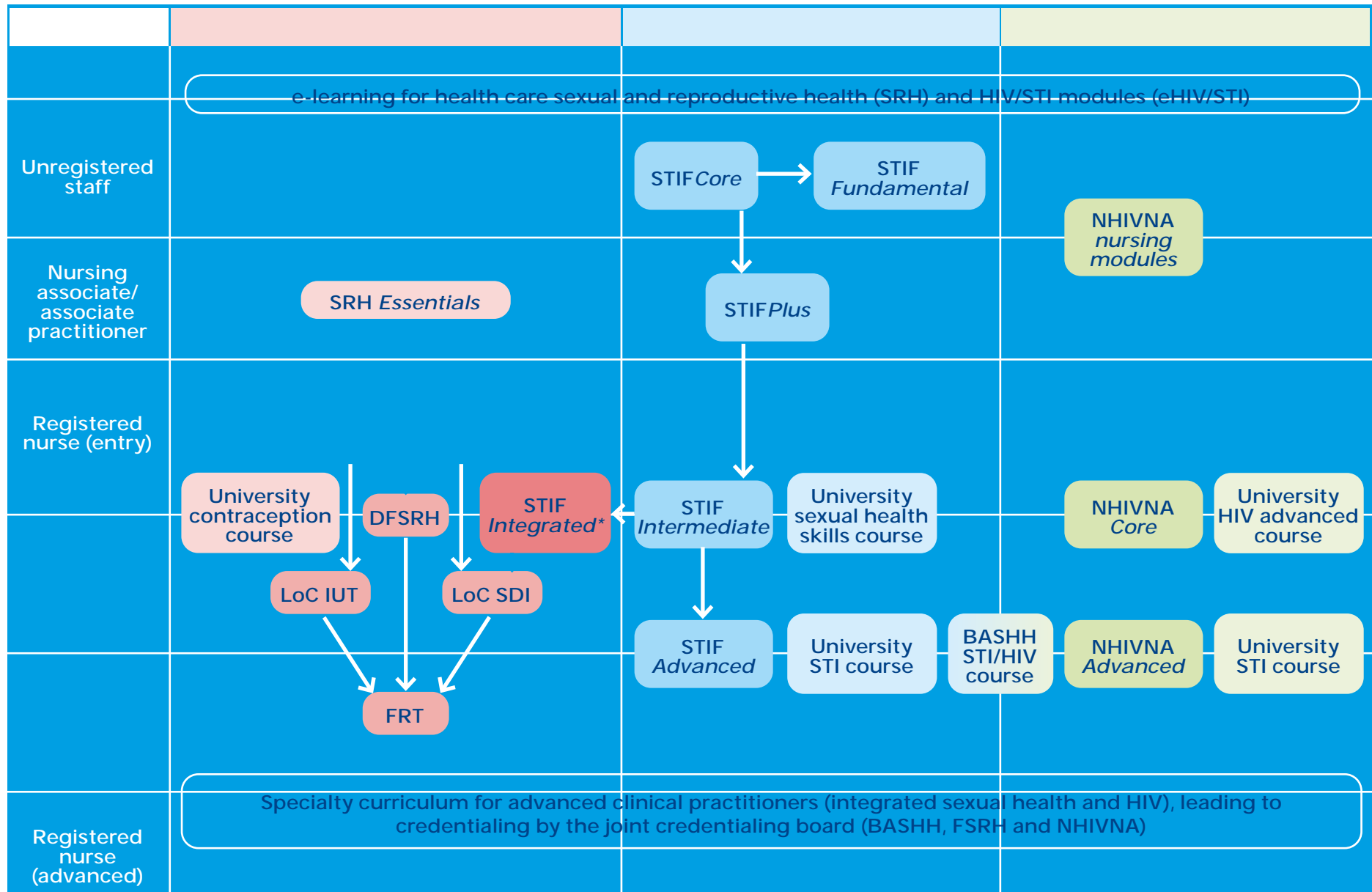
Masters level award in
Advanced Clinical Practice

ANP/ACNS
(contraception)

ANP/ACNS
(sexual health)

ANP/ACNS
(HIV)





Courses

Universities may offer different course and study days covering many areas relating to contraception and sexual health at different academic levels (diploma [level 5], degree [level 6] and masters [level 7] levels) and attracting different academic credits. These include: contraception, sexual health, and HIV as well as specialist sexual health courses (such as sexual dysfunction, health promotion, health advising, and abortion care). In addition, nurses would be able to undertake advanced clinical assessment skills, and independent and supplementary non-medical prescribing modules which can be used toward either undergraduate or postgraduate qualifications (BSc, MSc etc.)

e-Learning for Healthcare provides online education and programmes in a range of areas including contraception, HIV and STIs and is free to all NHS staff to access. Modules from e-Learning for Healthcare provide the basis of the theoretical learning for most of the BASHH, FSRH and NHIVNA qualifications, but can be taken on their own. See e-lfh.org.uk

fsrh.org/home

The SRH essentials course is designed specifically for primary care to give an introduction fsrh.org/education-and-training/srh-essentials and the (eSRH course) fsrh.org/education-and-training/e-learning-for-sexual-and-reproductive-healthcare-esrh/#how-to-access-esrh for regulated health care professionals at any level.

The electronic Knowledge Assessment (e-KA) is not a qualification, but an assessment of knowledge required for the other FSRH qualifications. The Diploma Faculty of Sexual and Reproductive Healthcare (DFSRH) at: fsrh.org/education-and-training/e-learning-for-sexual-and-reproductive-healthcare-esrh/#how-to-access-esrh is a contraception

qualification for medical, nursing and midwifery professionals, it is assessed theoretically with the e-KA as well as in practice.

FSRH Letter of Competence Subdermal Implants (LoC SDI), is for those clinicians wishing to undertake subdermal implants and has several versions: insertion and removal (LoC SDI IR), insertion only (LoC SDI IO) and removal only (LoC SDI RO), those wishing to undertake this qualification have to have completed the e-KA or STIF . FSRH Letter of Competence Intrauterine Techniques (LoC IUT) is for those wishing to undertake intrauterine contraception (intrauterine devices or intrauterine systems), those wishing to undertake this qualification are required to have completed the e-KA.

Those individuals who have an FSRH qualification can become an FSRH registered trainer (FRT) by undertaking a Postgraduate Award in Medical Education or through an equivalence route. The FSRH also offers a range of specialist courses and study days which cover topics such as menopause, ultrasound scanning, and natural family planning/fertility awareness. See FSRH Education and training at: fsrh.org/education-and-training

stif.org.uk

STIF is the first part of the theory course that is required to undertake STIF and STIF .

STIF is a more in-depth theory course and is recommended before undertaking the other STIF competency products.

STIF is open to any healthcare worker (including unqualified staff) and covers the basics in asymptomatic STI screening and management.

STIF as a specialist practice competency qualification covers the common STIs and related conditions and is assessed in clinical practice.

STIF builds on STIF Intermediate with additional workplace assessments in contraceptive care. STIF Integrated can be completed at the same time as STIF Intermediate or can follow on from successful STIF Intermediate certification. NB: the STIF programme is not currently available in Northern Ireland.

STIF is an advanced practice competency qualification, which covers the more complex presentations in the sexual health setting. The prerequisite for STIF is the STIF .

STIF is designed for experienced sexual health care professionals who can complete STIF Intermediate and STIF Advanced training in one pathway.

STIF allows STIF Integrated to be undertaken at the same time as STIF Intermediate in one single programme.

BASHH also offer a range of specialist study days and information for health advisers and nurses, including [bashh.org/events-education/bashh-sti-hiv-course](https://www.bashh.org/events-education/bashh-sti-hiv-course)

This curriculum, due to be launched in 2019, has been developed as a joint project between the British Association for Sexual Health and HIV (BASHH), the Faculty of Sexual and Reproductive Health (FSRH) and the National HIV Nurses Association (NHIVNA), as a Health Education England (HEE) supported project to standardise advanced clinical practice in integrated sexual health and HIV services.

It has been developed to provide a clear and comprehensive guide to the expected level and breadth of practice for advanced clinical practitioners working in integrated sexual health and HIV and has been designed to support practitioners, managers, higher education institutions and commissioners.

The curriculum has been designed to be used in clinical practice to develop specialty specific competence as an advanced clinical practitioner and is to be used in conjunction with university-based master's programmes. The three organisations are developing a process for those advanced clinical practitioners w10.9 (i)2(t)23 (i)0.7s[(p)-6.3t.7 (o d)-2.2 (e)11.2 (r)-

a pvnanced clinical

[nhivna.org](https://www.nhivna.org)

NHIVNA HIV nursing modules are a free online learning resource which covers the core areas of HIV nursing care

[nhivna.org/NHIVNA-HIV-nursing-modules](https://www.nhivna.org/NHIVNA-HIV-nursing-modules)

NHIVNA and NHIVNA have been developed in conjunction with STIF. NHIVA is a specialist practice competency qualification aimed at experienced registered nurses and is assessed in clinical practice. NHIVNA is an advanced practice competency qualification covering the more complex aspects of HIV care.

